

Malware Scanning and Cleanup Tool for  
Standalone PC/Closed System



# Trend Micro Portable Security 2™

A malware scanning and cleanup tool shaped like a USB flash drive in environments that Internet connection is not available or anti-malware software cannot be installed.



● Scan status and result notification with LED\*1



**Centralized  
Management**

**Easy  
Operation\*1**

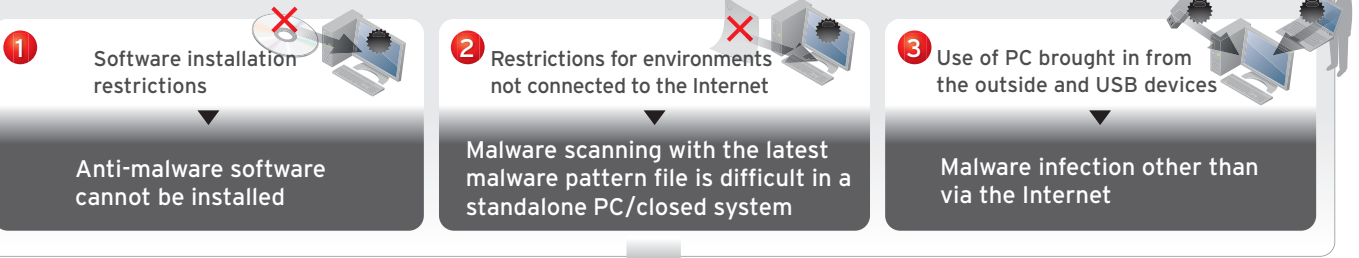
**No  
Installation  
Required\*2**

\*1 Easy operation refers to notification capability of scan status and result with LED, and scanning tool operation without preparing management computer. (For details, please refer to the reverse side)

\*2 When scanning malwares, drivers are created to the target terminal and files to the local HDD temporarily. After the scan, the drivers and files do not remain in the target terminal.

# No Internet connection does not mean safe and secure.

## Security measure challenges for standalone PC/closed system



## PCs of standalone/closed system also have malware infection risks

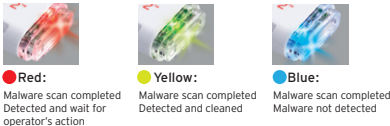
### Product features

#### Centralized management **NEW**

Obtain scan logs of the scanning tools in multiple locations in an integrated fashion. It is also possible to update the malware pattern files of the scanning tool and configure other settings all at once.

#### Easy operation

##### Scan status and result notification with LED **NEW**



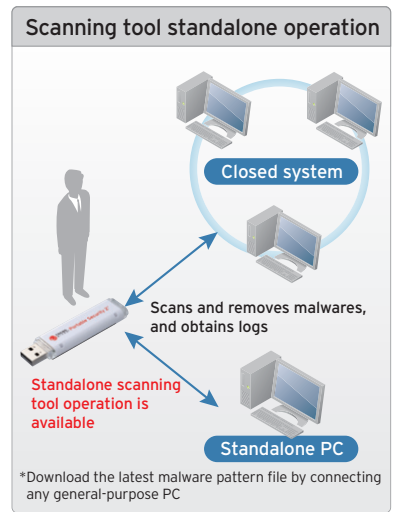
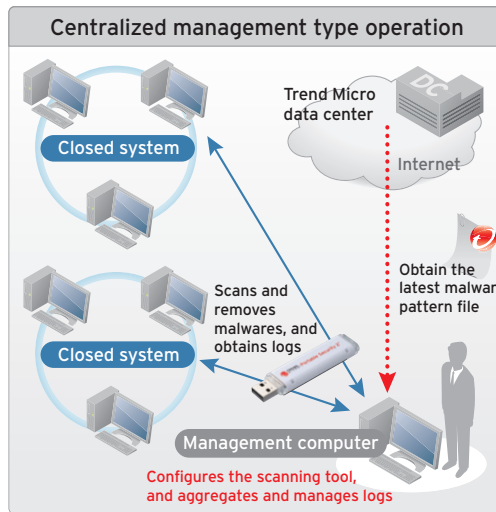
Using only the scanning tool, malwares can be scanned and removed, and the malware pattern file can be updated.

#### No installation required\*

Scans target terminals without installing scanning software

\*1 When scanning malwares, drivers are created to the target terminal and files to the local HDD temporarily. After the scan, the drivers and files do not remain in the target terminal.

### Operation image



## System requirements for Trend Micro Portable Security 2 (TMPS2)

	Management program	Scanning tool
OS	<ul style="list-style-type: none"> <li>Windows XP Professional SP1 / SP2 / SP3 32bit</li> <li>Windows Vista Business / Enterprise / Ultimate SP1 / SP2 32/64bit</li> <li>Windows 7 Professional / Enterprise / Ultimate SP1 32/64bit</li> <li>Windows 7 Home Basic / Home Premium SP1 64bit</li> <li>Windows 8 Pro / Enterprise 32/64bit *1</li> </ul>	<ul style="list-style-type: none"> <li>Windows Server 2003 Standard / Enterprise SP2 / R2 SP2 32/64bit</li> <li>Windows Server 2008 Standard / Enterprise SP2 32/64bit</li> <li>Windows Server 2008 Standard / Enterprise R2 SP1 64bit</li> <li>Windows Server 2012 Standard 64bit</li> </ul>
		<ul style="list-style-type: none"> <li>Windows XP Professional SP1 / SP2 / SP3 64bit</li> <li>Windows XP Embedded SP1 / SP2 / SP3 32bit *2</li> <li>Windows Embedded Standard 2009 32bit *2</li> <li>Windows Embedded Standard 7 32bit/64bit</li> <li>Windows Embedded POSReady 2009 32bit</li> <li>Windows Embedded POSReady 7 32bit</li> <li>Windows XP Professional for Embedded Systems SP1 / SP2 / SP3 32bit</li> <li>Windows Vista for Embedded Systems SP1 / SP2 32bit</li> <li>Windows 7 for Embedded Systems SP1 32bit / 64bit</li> <li>Windows Server 2003 for Embedded Systems SP1 / SP2 32bit, R2 32bit</li> <li>Windows Server 2008 for Embedded Systems 32bit/64bit, R2 64bit</li> </ul>
CPU	Same as the minimum system requirements for each OS * For details, please refer to Readme.	
Memory	Same as the minimum system requirements for each OS * For details, please refer to Readme.	
Free HDD space required	300MB	200MB
Display resolution	1024 x 768 or more	640 x 480 or more
Supported languages	MUI (English, Japanese)	MUI (English, Japanese)

\*1 Windows RT, and Windows 8 installed on tablet terminals are not supported. \*2 These OS are componentized version of Windows XP Professional. When the OS components are customized by customer, we may not offer support for troubles that occur only in the customized environment and are not replicated on Windows XP Professional. \* Contents of system requirements such as supported OS and hard disk capacity are subject to change without notice due to the end of OS support and product improvements by Trend Micro. For the latest information, refer to <http://go2.trendmicro.com/geotp/tmps2>. \* TMPS2 does not have the real-time scanning function. \* TMPS2 cannot be used as a general USB flash drive because it does not have the data storage area for customers. \* TMPS2 does not scan for malwares on management computers. \* A log is created on the local hard disk of the scanning target computer at USB boot scanning. \* Windows 2000 can be scanned via USB boot. However, it is not supported if it does not support booting from USB devices, uses EFI/UEFI, has a RAID environment, the HDD is initialized with GPT instead of MBR, or the HDD is connected via SCSI, etc.



Securing Your Journey to the Cloud

[www.trendmicro.com](http://www.trendmicro.com)

TREND MICRO, Trend Micro Portable Security, and Portable Security are trademarks or registered trademarks of Trend Micro Incorporated. All other company and/or product names may be trademarks or registered trademarks of their respective owners. The contents are as of February 2014. Contents are subject to change without notice. Copyright © 2014 Trend Micro Incorporated. All rights reserved.

Contact details: