

SmartAX MA5669

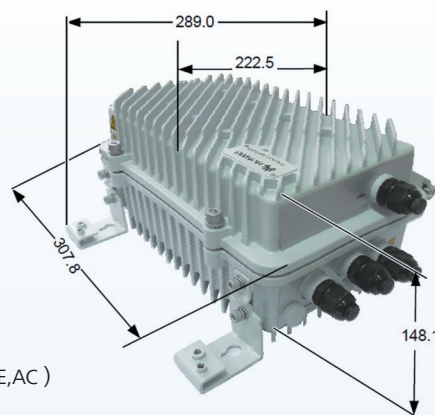


The SmartAX MA5669 is an industry-leading remote multi dwelling unit (MDU) launched by Huawei, which provides broadband services on the Fiber To The Building (FTTB) network and POE function on a passive optical network (PON). The MA5669 is a integrated box-type device and providing two GPON or GE uplink ports, 2 channel GE access (POE build-in) in user side . The MA5669 features a broad temperature range, low power consumption, mute design, high stability, and can be used on WLAN backhaul scenario and support wall-mounting, pole installation, cable installation, meeting broadband and AP backhaul deployment.

Appearance

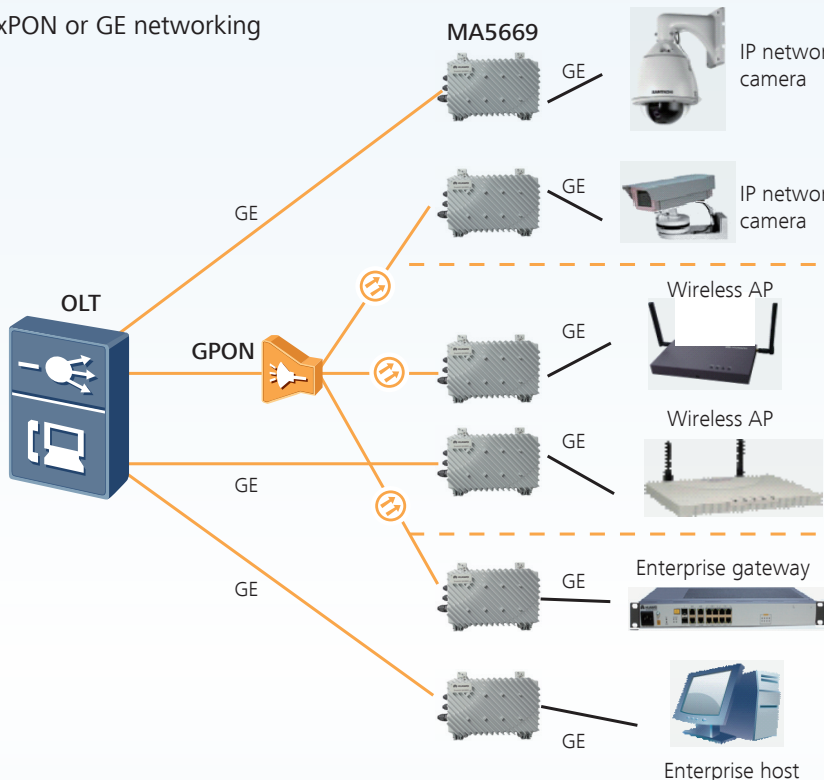


MA5669 integrated device(2GE,AC)



Usage Scenario

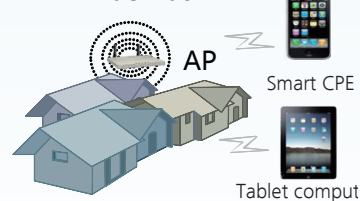
xPON or GE networking



Video Monitoring



WLAN Backhaul



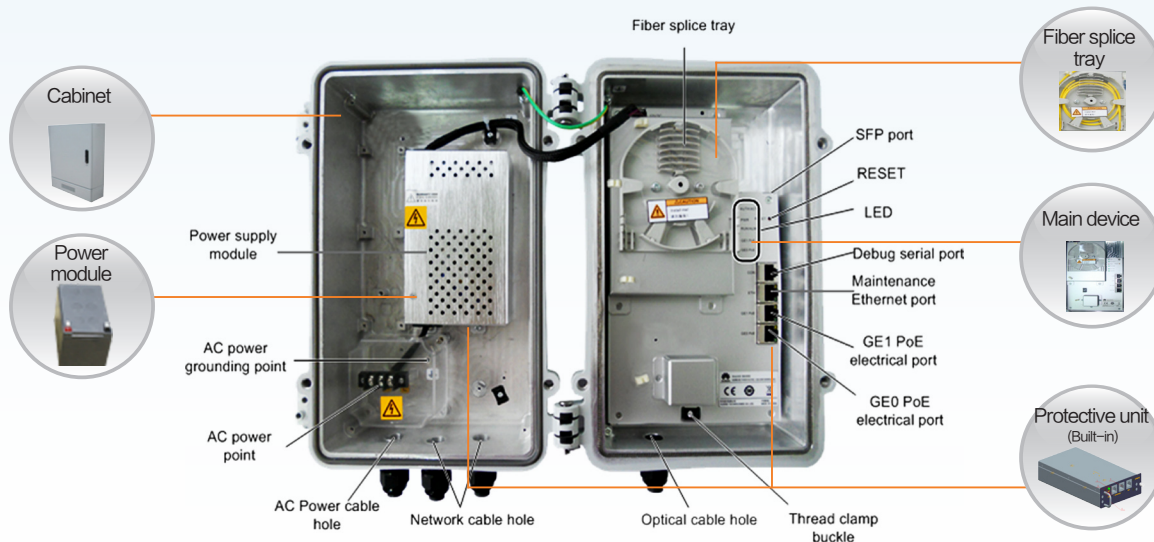
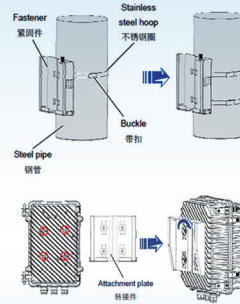
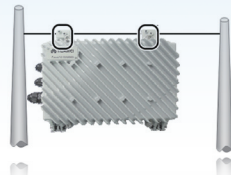
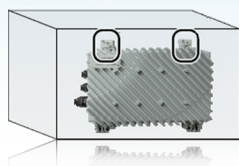
Ethernet Leased Line



WLAN Backhaul and video monitoring

MA5669 support POE function, which suit for WLAN backhaul and video monitoring scenario, MA5669 connects to the optical line terminal (OLT) through the GPON interface. In the downstream direction, MA5669 connects to AP or camera by using the category-5 cable and POE power cascaded on the cable to provide high-bandwidth broadband.

Easy installation



High integration reduces Capex greatly. All-in-one and plug-and-play!

Highlights

- Automatic adaptation to GPON and GE modes: The MA5669 provides two uplink ports using the small form-factor pluggable (SFP) optical modules to meet different site requirements.
- Plug-and-play (PnP) service provisioning: The MA5669 allows remote issuing of configuration. A management channel and service channel are created after the MA5669 is powered on and registers successfully. Manual onsite configuration is not required.
- High reliability: The MA5669 supports the working temperature from -40°C to 55°C , 6 kV lightning protection..
- Suit for WiFi and video monitoring scenario: support POE function, lower investment and fast service deployment.
- Support IEEE 802.3af (15.4W) and IEEE802.3at (30W) protocol for each port.
- Integrated device, easy installation, support wall-mounting, Cable installation, Pole installation

Features

GPON	ITU G.984-compliance
	32 T-CONTs
	1000 GEM ports
Broadband	4096 VLANs, supporting QinQ and stacking VLANs
	4096 MAC addresses, supporting VMAC 802.1p, supporting PQ and WRR flow control, and ACL
Multicast	IGMPv2 and IGMPv3
	IGMP proxy and IGMP snooping
	A maximum of 1024 configurable multicast programs in the system A maximum of 48 multicast users A maximum of 16 concurrent multicast programs for each user
Security	PPPoE+ and DHCP option82
	Static and dynamic MAC address binding
	Anti-MAC and anti-IP spoofing; source MAC address and IP address filtering Anti-DoS attack and firewall
Maintenance and management	SNMPv1, SNMPv2, and SNMPv3
	Telnet and SSHv2
	Remote and batch pre-deployment Remote upgrade and monitoring



Specifications

Dimensions	307.8 × 222.5 × 148.1mm (W*D*H)
Network-side port	The MA5669 provides two uplink ports that use the SFP optical modules and automatically adapt to multiple modes, including GPON and GE. The two uplink ports can be configured as follows: <ul style="list-style-type: none">• 2 x GPON• 2 x GE (optical)
User-side port	The MA5669 supports: <ul style="list-style-type: none">• 2 GE (electrical) +2POE• 2 GE (electrical)
Operating temperature	-40°C to 55°C; startup at -25°C
Humidity	5% to 95% (non-condensing)
Power supply	AC: 220 V/110 V
Weight	3.7 kg (full configuration)

Copyright © Huawei Technologies Co., Ltd. 2012. All rights reserved.

No part of this document may be reproduced or transmitted in any form or by any means without prior written consent of Huawei Technologies Co., Ltd.

Trademark Notice



HUAWEI, and are trademarks or registered trademarks of Huawei Technologies Co., Ltd.

Other trademarks, product, service and company names mentioned are the property of their respective owners.

General Disclaimer

The information in this document may contain predictive statements including, without limitation, statements regarding the future financial and operating results, future product portfolio, new technology, etc. There are a number of factors that could cause actual results and developments to differ materially from those expressed or implied in the predictive statements. Therefore, such information is provided for reference purpose only and constitutes neither an offer nor an acceptance. Huawei may change the information at any time without notice.

HUAWEI TECHNOLOGIES CO., LTD.

Huawei Industrial Base
Bantian Longgang
Shenzhen 518129, P.R. China
Tel: +86-755-28780808
Version No.: M3-028708-20120712-C-2.0

www.huawei.com