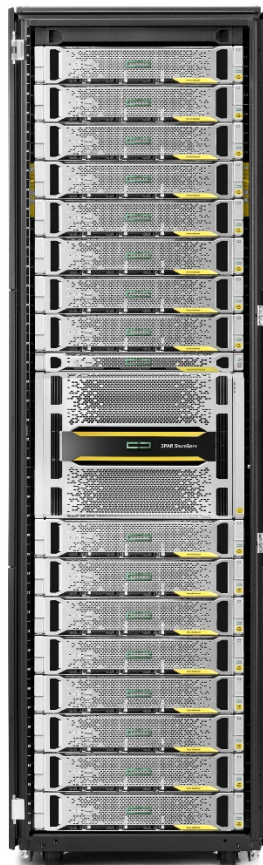


Overview

HPE 3PAR StoreServ 9000 Storage

The HPE 3PAR StoreServ 9000 Storage is an enterprise-class flash array that helps you consolidate primary storage workloads - for file, block, and object - without compromising performance, scalability, data services, or resiliency. This newest 3PAR model based on the proven 3PAR architecture is purpose built for all-flash consolidation, delivering the performance, simplicity, and agility needed to support your hybrid IT environment. HPE 3PAR StoreServ 9000 Storage is available in a single all-flash model, the 9450, that offers rich Tier-1 data services, quad-node resiliency, fine-grained Quality of Service (QoS), seamless data mobility between systems, high availability through a complete set of persistent technologies, and simple and efficient data protection with a flat backup to HPE StoreOnce Backup appliances.



HPE 3PAR StoreServ 9000 Storage

Overview

Summary	9450
Number of Controller Nodes	2 or 4
HPE 3PAR Gen5 ASICs	4 or 8
Processors	4-8 x 10-core 2.4 GHz
Total Cache	869 GiB
Total Cache per node pair	448 GiB
Maximum Host Ports	80 ports
16Gb/s Fiber Channel Host Ports	0 – 80 ports
10Gb/s iSCSI Host Ports	0 – 40 ports
10Gb/s Ethernet Ports for File Persona	0 – 24 ports
Built-in 10GbE Ports ¹	2 – 4 ports
Number of Solid State Drives	6 – 576
Max Raw Capacity ²	6000 TiB ³
Maximum Usable File Capacity ⁴	2 – 512 TiB

Capacity Details	9450
RAID Levels	RAID 0, 1, 5, 6
RAID 5 Data to Parity Ratios	2:1 - 8:1
RAID 6 Data to Parity Ratios	4:2, 6:2, 8:2, 10:2, 12:2, 14:2
Drive Capacities (SSDs) ⁵	400GB SSD, 1.92TB SSD, 3.84TB SSD, 7.68TB SSD, 15.36TB SSD
Number of Add-on Drive Enclosures ⁶	2 – 48 enclosures ⁷

NOTE: Specifications are subject to change without notice.

¹ Two built-in 10GbE ports per node pair can be used for Remote Copy (RCIP), maximum of 8 usable.

² The minimum supported raw capacity is equal to 6 x Min drive size available.

³ For storage capacity, 1 GiB = 2³⁰ bytes and 1 TiB = 1,024 GiB

⁴ Usable file capacity supported for HPE 3PAR File Persona

⁵ SSDs are Solid State Drives

⁶ Each Drive Enclosure holds up to 24 small form factor (2.5") drives in 2U

⁷ The recommended minimum is 4 drive enclosures per controller node pair

Host OS Support

Citrix® XenServer® | HP-UX® | IBM® AIX® | Microsoft® Windows® Server, including Microsoft® Hyper-V™ | Apple Mac OS OpenVMS* | Oracle® Linux® (UEK and RHEL compatible kernels) | Oracle® Solaris | Ubuntu | VMware vSphere™

Red Hat® Enterprise Linux® | Red Hat® Enterprise Virtualization

SUSE® Linux Enterprise | SUSE® Linux Virtualization | IBM Virtualization | Oracle VM

For the latest information on supported operating systems refer to Single Point of Connectivity Knowledge for HPE Storage Products (SPOCK): <http://www.hpe.com/storage/spock>

Service and Support and Warranty Information

Warranty

3 Year, On-site Warranty Service. 24x7 4-hour onsite response

The warranty on all HPE 3PAR StoreServ 9000 Solid State Drives is 5 years, 24x7 4-hour onsite response. Please refer to the HPE 3PAR StoreServ 9000 Drives section for the complete list of SSD SKUs. Hewlett Packard Enterprise warrants only that the Software media will be free of physical defects for a period of ninety (90) days from delivery.

For more information about Hewlett Packard Enterprise's Global Limited Warranty and Technical Support, visit: <http://www.hpe.com/storage/warranty>

NOTE: All currently available HPE 3PAR StoreServ SSDs carry a five-year warranty offering unconditional replacement in case of drive failure, media wear-out, or both.

NOTE: For Storage Base SKUs and Drive SKUs the warranty only covers the HW and not the All-inclusive software that is included with the same SKUs.

Service and Support

Protect your business beyond warranty with HPE Support Services

HPE Technology Services delivers confidence, reduces risk and helps customers realize agility and stability. Our integrated portfolio of Services for storage help customers reduce costs, optimize data, streamline storage management, and improve backup and recovery. HPE Support Services enable you to choose the right service level, length of coverage and response time as you purchase your new storage solution, giving you full entitlement for the support for need for your IT and business.

Connect your devices

Unlock all of the benefits of your technology investment by connecting your products to Hewlett Packard Enterprise. Achieve up to 77%¹ reduction in down time, near 100%² diagnostic accuracy and a single consolidated view of your environment. By connecting, you will receive 24x7 monitoring, pre-failure alerts, automatic call logging, and automatic parts dispatch. HPE Proactive Care Service and HPE Datacenter Care Service customers will also benefit from proactive activities to help prevent issues and increase optimization. All of these benefits are already available to you with your server storage and networking products, securely connected to Hewlett Packard Enterprise support.

1- IDC

2 - HP CSC reports 2014 - 2015

Optimized Care

HPE Proactive Care Advanced* - 24x7 coverage, three year Support Service

This services helps achieve a higher return on your product investment with personalized support from a local assigned Account Support Manager who will share best practice advice and personalized recommendations designed to help improve availability and performance to increase stability and reduce unplanned downtime. Leverage your system's ability to connect to Hewlett Packard Enterprise for pre-failure alerts, automatic call logging and parts dispatch. For business critical incidents, this service offers critical event management to reduce mean time to resolution. This recommendation provides 24x7 coverage with four-hour response for hardware and collaborative support that offers two-hour callback for supported software issues. Collaborative software management is included with independent software vendors unless you have your software support from Hewlett Packard Enterprise where we own all cases from start through to resolution.

<https://www.hpe.com/h20195/v2/GetPDF.aspx/4AA5-3259ENW.pdf>

Standard Care

HPE Proactive Care* with 24x7 coverage, three year Support Service + 20 services credits for 1st year

HPE Proactive Care gives customers an enhanced call experience plus helps preventing problems and maintains IT stability by utilizing personalized proactive reports with recommendations and advice when your products are connected to Hewlett Packard Enterprise. This Service combines three years' proactive reporting and advice with our 24x7 coverage, four hour hardware response time when there is a problem.

Service and Support and Warranty Information

<https://www.hpe.com/h20195/v2/GetPDF.aspx/4AA3-8855ENW.pdf>

Basic Care

HPE Proactive Care* with 24x7 coverage, three year Support Service

HPE Proactive Care gives customers an enhanced call experience plus helps preventing problems and maintains IT stability by utilizing personalized proactive reports with recommendations and advice when your products are connected to Hewlett Packard Enterprise. This Service combines three years' proactive reporting and advice with our 24x7 coverage, four hour hardware response time when there is a problem.

<https://www.hpe.com/h20195/v2/GetPDF.aspx/4AA3-8855ENW.pdf>

HPE 3PAR SSD Support **3PAR SSD Extended Replacement Program**

Provides for the post warranty replacement of eligible HPE 3PAR SSDs under active HPE support coverage in the event the SSD has reached its maximum usage limit based upon the HPE 3PAR SSD Life-Left reading.

<http://h20195.www2.hpe.com/V2/GetPDF.aspx/a00000122ENW.pdf>

HPE Services Support Credits

Services Support Credits offer flexible services and technical skills to meet your changing IT demands. With a menu of service that is tailored to suit your needs, you get additional resources and specialist skills to help you maintain peak performance of your IT. Offered as annual credits, you can plan your budgets while proactively responding to your dynamic business.

NOTE: HPE Proactive Care and HPE Proactive Care Advanced require that the customer connect their devices to make the most of these services and receive all the deliverables.

Related Services

HPE 3PAR StoreServ 8000, 9000, and 20000 Storage Installation and Startup Service Hewlett Packard Enterprise provides onsite deployment of your HPE 3PAR StoreServ 8000, 9000, and 20000 Storage arrays into your storage environment. This Service is included in all the levels of Care mentioned above.

<http://h20195.www2.hpe.com/v2/GetPDF.aspx/4AA5-8035ENW.pdf>

HPE 3PAR All-inclusive Multi-system Software Installation and Startup Service

This service, which provides installation and startup for the HPE 3PAR Remote Copy, Peer Motion, and Peer Persistence functionality of HPE 3PAR All-inclusive Multi-system Software in your storage environment, is designed to help you get HPE 3PAR All-inclusive Multi-system Software up and running quickly and to provide a demonstration of the product's key features using sample or test data only

<https://www.hpe.com/h20195/v2/GetPDF.aspx/4AA6-6385ENW.pdf>

HPE 3PAR All-inclusive Single-system Software Installation and Startup Service Complementing your new HPE 3PAR All-inclusive Single-system software, this service provides the necessary activities required to help you deploy Adaptive Optimization, Dynamic Optimization, File Persona, Priority Optimization, System Reporter, Virtual Copy, and an overview of Virtual Domain and Virtual Lock. For Virtual Copy, the service provides a demonstration of the product's key features using sample or test data only

<https://www.hpe.com/h20195/v2/GetPDF.aspx/4AA6-6549ENW.pdf>

HPE 3PAR 8000, 9000, and 20000 Software Installation and Startup Service

Designed to provide a smooth startup, this service provides deployment of individual HPE 3PAR 8000, 9000, and 20000 storage software features, helping to ensure proper installation in your storage environment as well as helping you increase the benefit from your storage investment.

<http://h20195.www2.hpe.com/V2/GetPDF.aspx/4AA5-8036ENW.pdf>

HPE 3PAR Peer Persistence Software Installation and Startup Service

Service and Support and Warranty Information

Provides implementation of the HPE 3PAR Peer Persistence Software feature. The service is designed to help get HPE 3PAR Peer Persistence up and running quickly and to provide a demonstration of the product's key features using sample or test data only.

<http://h20195.www2.hpe.com/V2/GetPDF.aspx/4AA4-2772ENW.pdf>

HPE Storage Transformation Workshop

Explore data management to business-aligned visions, covering cloud, object, end to end data protection and BC/DR.

<http://h20195.www2.hpe.com/V2/GetPDF.aspx/4AA4-9541ENW.pdf>

HPE 3PAR StoreServ Data Migration

Proven methodology, expertise and tools to help you migrate data across your data center or around the globe.

<http://h20195.www2.hpe.com/V2/GetPDF.aspx/4AA5-3759ENW.pdf>

HPE Storage Modernization Service

Modernize your storage environment to take better advantage of physical or virtualized server environments, all flash, cloud, and object storage solutions.

<http://h20195.www2.hpe.com/v2/GetPDF.aspx/4AA5-8498ENW.pdf>

Data Profiling Service

Let TS Consulting assess your current file storage and identify redundant, obsolete and trivial data – simplifying your transformation to 3PAR and reducing migration costs.

HPE StoreServ Integration Service

Integrate your new HPE 3PAR StoreServ system so that it is agile, performs effectively, and scales to rapid growth.

<http://h20195.www2.hpe.com/V2/GetPDF.aspx/4AA4-9254ENW.pdf>

HPE StoreServ Online Import Quick Start Service

Choose the most effective, appropriate methods for configuring and migrating to a HPE 3PAR platform.

<http://h20195.www2.hpe.com/v2/getpdf.aspx/4AA6-0422ENW.pdf>

HPE EVA to 3PAR Acceleration Service - The HPE EVA to HPE 3PAR Acceleration Service provides customers with OPEX and CAPEX savings as a result of your journey from HPE EVA to HPE 3PAR StoreServ. This service provides customers with an alternative DIY ("do-it-yourself") data migration option with guidance from TS Consulting Storage migration specialists.

<http://h20195.www2.hpe.com/V2/GetPDF.aspx/4AA4-4234ENW.pdf>

HPE SAN Deployment Service

Hewlett Packard Enterprise delivers complete design and implementation services for Fibre Channel, FCoE, FCIP, SAS, and iSCSI SAN connectivity components.

<http://h20195.www2.hpe.com/V2/GetPDF.aspx/5981-8527EN.pdf>

HPE Data Replication Solution Service for 3PAR Virtual Copy

This service enables snapshots and mirroring to facilitate data restores, minimize downtime for backups, perform application testing and support data mining use with decision-support tools.

<http://h20195.www2.hpe.com/v2/GetPDF.aspx/4AA3-8107ENW.pdf>

HPE Data Replication Solution Service for 3PAR Remote Copy

HPE Data Replication Solution Service for 3PAR Remote Copy Software configures real-time data mirroring between local and remote 3PAR storage systems to safeguard critical business information.

<http://h20195.www2.hpe.com/V2/GetPDF.aspx/4AA3-8627ENW.pdf>

Service and Support and Warranty Information

HPE 3PAR Adaptive Optimization Policy Implementation Service

Provides analysis, recommendations, and implementation of HPE 3PAR Adaptive Optimization policies to enable storage tiering using data collected from the HPE 3PAR Storage system over time.

<http://h20195.www2.hpe.com/V2/GetPDF.aspx/4AA2-3842ENW.pdf>

HPE Storage Virtual Volume Design and Implementation Service

When deploying an HPE Storage array, the HPE Virtual Volume Design and Implementation Service provides the necessary activities required to design and implement a new virtual volume configuration.

<http://h20195.www2.hpe.com/V2/GetPDF.aspx/4AA2-3764ENN.pdf>

HPE Thin Volume Conversion Service

Provides evaluation and execution of conversion from standard to thin provisioned virtual volumes for HPE 3PAR Storage. A service specialist advises the customer on HPE 3PAR Thin Provisioning best practices, provides evaluation of potential disk capacity savings if target virtual volumes are converted, and plans and implements thin conversion processing. The service leverages 3PAR thin provisioning capabilities to help optimize storage capacity, reduce cost, increase agility and maintain performance.

<http://h20195.www2.hpe.com/V2/GetPDF.aspx/4AA2-3842ENW.pdf>

HPE Performance Analysis Service for HPE Disk Arrays

The service provides data collection, detailed I/O analysis and enhancement recommendations for HPE 3PAR StoreServ Storage disk arrays, HPE EVA P6000 Storage disk arrays and HPE XP Storage disk arrays. HPE Performance Analysis Service for HPE Storage Disk Arrays provides a single engagement concerning the performance of a single HPE Storage disk array.

<http://h20195.www2.hpe.com/V2/GetPDF.aspx/5982-6668EN.pdf>

HPE Data Sanitization Storage and Server Services

These services provide the skilled resources and tools to help your organization address the need to protect data when your organization is retiring systems, upgrading storage and servers, returning leased equipment, or redeploying data storing devices. Using specialized software techniques, an HPE service specialist or authorized service partner will help ensure that data cannot be reconstructed or retrieved from hard disk media in your server and storage devices. These services offer you a smart alternative or augmentation to physical hardware destruction by executing procedures to remove data from disk media.

<https://www.hpe.com/h20195/v2/GetPDF.aspx/5981-9510EN.pdf>

HPE 3PAR Performance and Capacity Trending Service

HPE 3PAR Performance and Capacity Trending Service provides data collection, analysis, and reports with key performance and capacity metrics for your HPE 3PAR StoreServ array. Through this service, you will receive a specified number of reports describing long-term trends in performance and capacity usage, and have the option to purchase additional reports. You will also receive briefing sessions highlighting The Hewlett Packard Enterprise findings and recommendations.

<http://h20195.www2.hpe.com/V2/GetPDF.aspx/4AA5-8792ENW.pdf>

HPE 3PAR Health Check Service

The HPE 3PAR Health Check service is delivered as a single engagement, providing data collection, analysis, report creation, and a briefing session concerning the performance of a single HPE 3PAR StoreServ Storage System. This health check service is best for HPE 3PAR StoreServ Storage Systems that have been installed and are in normal production mode. It can also be used to establish a baseline for future reference to improve the effective use of your storage system.

<http://h20195.www2.hpe.com/V2/GetPDF.aspx/4AA4-3404ENW.pdf>

HPE 3PAR Storage Rebalance Service

The HPE 3PAR Rebalance Service helps balance data across an HPE 3PAR StoreServ Storage array to take advantage of the capabilities of the array architecture. The service provides analysis, planning, and implementation of data movement and/or physical movement of drive magazines within the array.

<http://h20195.www2.hpe.com/V2/GetPDF.aspx/4AA4-0280ENW.pdf>

Configuration Information

Customer Self Installation (CSI)

Customers have the option of self-installing the HPE 3PAR StoreServ 9000 Storage array. The Customer Self Installation option is available for HPE 3PAR StoreServ 9000 Storage arrays that meets the following criteria:

- 2-node or 4-node configurations
- CTO configurations (factory integrated)
- Single rack (the physical Service Processor can be in a separate rack)

Customer technical profile

In order to successfully install the HPE 3PAR StoreServ 9000 Storage array the installer should:

- Have a good understanding and knowledge of Storage Area Networks, Fiber Channel fundamentals and a basic understanding of TCP/IP and other networking protocols (DNS/NTP).
- Have a good understanding of server virtualization technology, in particular of Hypervisors such as VMware ESXi and Microsoft Hyper-V.
- Be able to maintain and install server hardware and Microsoft Windows and/or Linux OS.
- Have experience creating Storage LUNs, presenting/exporting LUNs to a server and formatting the LUNs to make them usable for applications.
- Be able to troubleshoot hardware and software issues using logs and documentation.

If the installer doesn't meet the profile or is not comfortable with the self-installation process, Hewlett Packard Enterprise recommends engaging the Hewlett Packard Enterprise sales representative or Hewlett Packard Enterprise Channel Partner to purchase HPE deployment services.

Customer responsibilities

The Customer will:

- Ensure that the host and SAN environment is supported and compliant with HPE recommendations and best practices. Host and SAN Implementation Guides are available at <http://www.hp.com/go/hpsc>. Support Matrix are available on SPOCK (HP Storage Single Point of Connectivity Knowledge) <http://www.hpe.com/storage/spock>.
- Resolve any problems with their SAN and host environment, prior to installing the HPE 3PAR StoreServ 9000 Storage.

Customer Self Installation documentation

Prior to installing the HPE 3PAR StoreServ 9000 Storage array, the installer should thoroughly review the following documentation.

- HPE 3PAR StoreServ 9000 Storage Self-Install Guide: <http://www.hpe.com/support/3PAR9000CSI>
- HPE 3PAR StoreServ 9000 Storage Installation video: <http://www.hpe.com/support/3PAR9000CSIVideo>
- Forum on HPE 3PAR StoreServ 9000 Self-Install: <http://www.hpe.com/forum/3PARCSIHELP>

The Customer Self Installation option is available only for initial installs, not for upgrades. Customer Self Upgrade (CSU) is not available for HPE 3PAR OS software on HPE 3PAR StoreServ 9000 Storage arrays. Customer Self Repair (CSR) information is available at this link: http://h18033.www1.hp.com/hpe/support/selfrepair/ww/replace_part.asp?myinc=s008

NOTE: Customers performing a self-install (according to rules identified above) will not void their warranties and will be fully supported.

Configuration Information

Step 1 - Choose the Base configuration and Controller Nodes

HPE 3PAR StoreServ 9000 configurations start with the selection of the Base. The Base includes the controller node chassis and two controller nodes. Each Controller Node consists of CPUs, ASICs, Cache banks and connectivity options for the storage array.

HPE 3PAR StoreServ 9000 Storage Base

HPE 3PAR 9450 2-node Storage Base with All-inclusive Single-system Software

Q0E92A

- A minimum of one (1) storage base must be ordered for each array.
- Each storage base includes the controller node chassis and two (2) controller nodes
- Each controller node includes two (2) SAS adapters

HPE 3PAR StoreServ 9000 Controller Nodes

Add a pair of the HPE 3PAR StoreServ 9000 Controller Nodes to the 9000 Storage Base to configure a HPE 3PAR StoreServ 9000 4-node array.

HPE 3PAR 9450 Storage Node with All-inclusive Single-system Software

Q7F41A

- Each Controller Node SKU represents a single (1) unit
- Each Controller Node SKU includes two (2) SAS adapters
- Controller Nodes are always ordered in pairs on a HPE 3PAR StoreServ 9000 Storage array
- Only one (1) pair of 9450 Controller Nodes can be ordered per array
- Each Controller Node SKU is loaded with All-inclusive Single-system Software
- The Controller Nodes have built-in Gigabit Ethernet ports for management and Remote Copy over IP

HPE 3PAR StoreServ 9000 Upgrade Controller Nodes

Use the HPE 3PAR StoreServ 9000 Upgrade Controller Nodes to increase the number of controller nodes on an existing previously installed HPE 3PAR StoreServ 9000 array. Increasing the controller nodes on an existing array helps improve resiliency, performance and increase scalability in a balanced fashion.

HPE 3PAR 9450 Upgrade Node with All-inclusive Single-system Software

Q0E94A

- Each Upgrade Controller Node SKU represents a single (1) unit
- Each Upgrade Controller Node SKU includes two (2) SAS adapters
- Upgrade Controller Nodes are always ordered in pairs on a HPE 3PAR StoreServ 9000 Storage array
- Only one (1) pair of 9450 Upgrade Controller Nodes can be ordered per array
- Each Upgrade Controller Node SKU is loaded with All-inclusive Single-system Software
- The Upgrade Controller Nodes have built-in 1Gb Ethernet port for management and 10Gb Ethernet port for Remote Copy over IP

Configuration Information

Step 2 - Choose Drive Adapter

HPE 3PAR StoreServ 9000 Storage uses SAS drive adapters for backend drive connectivity. Two SAS adapters are included as part of each controller node. Each SAS adapter on a controller node can connect up to 8 drive enclosures. HPE 3PAR StoreServ 9000 Storage arrays have 12Gbps SAS backend.

HPE 3PAR StoreServ 9000 Drive Adapters

Order the following SKU to configure a third SAS adapter on the HPE 3PAR StoreServ 9000 controller nodes. This is optional because each controller node already includes 2 SAS adapters.

HPE 3PAR 9000 4-port 12Gb SAS Host Bus Adapter Q0E96A

- Two (2) SAS adapters are included as part of each controller node
- A third optional SAS adapter can be ordered per controller node

Step 3 - Choose Host Adapter

Host adapters can be ordered separately to be installed in the field or they can be factory configured into controller nodes. Host adapter cards provide the array with additional FC ports, with 10Gb/sec iSCSI ports, or 10Gb/sec Ethernet ports. The additional FC ports can be used for multiple purposes including connection to hosts and connection to other HPE 3PAR StoreServ Storage systems in a Remote Copy or Peer Motion relationship. The iSCSI ports permit host connection in iSCSI environments. The Ethernet ports can be used to natively host various File protocols and core file data services.

HPE 3PAR StoreServ 9000 Host Adapters

HPE 3PAR 9000 4-port 16Gb Fiber Channel Host Bus Adapter Q0E97A

HPE 3PAR 9000 2-port 10Gb iSCSI Converged Network Adapter Q0E98A

HPE 3PAR 9000 2-port 10Gb Ethernet Host Bus Adapter Q0E99A

- A minimum of one (1) host adapter per node must be ordered.
- The 16Gb Fiber Channel Adapter includes (4) 16Gb/s shortwave FC SFP+. The 10Gb iSCSI Adapter includes (2) 10Gb/s shortwave SFP+. The 10Gb Ethernet Adapter includes (2) 10Gb/s SR SFP+.
- Each node in a node pair must have the same number and type of adapters.
- The 4 ports of the FC adapter can be individually configured to connect to a host or to a remote array in a Remote Copy configuration.

NOTE: Ethernet Adapters can be used only for File services connectivity

Step 4 - Choose Drive Enclosures

Add drive enclosures to include drives in the configuration (the controller nodes don't include any drive). Drive enclosures can be ordered separately for installation in the field, or they can be factory configured in a rack. Each drive enclosure supports twenty-four (24) small form factor 2.5" drives. The HPE 3PAR StoreServ 9450 supports up to forty-eight (48) drive enclosures.

Drive Enclosures

HPE 3PAR 9000 24-disk 2U SFF (2.5in) SAS Drive Enclosure Q0E95A

- A minimum of 2 drive enclosures is required per node pair.
- Each drive enclosure includes 24 drive bays for small form factor 2.5" drives.

Configuration Information

- Drive enclosures by default are connected directly to the controller nodes (direct connect). As an option, it is possible to have the drive enclosures connected to the controller nodes in (2-level deep) daisy chains.
- The best practice is to balance the drive enclosures across the SAS ports on each controller node.
- With a four node configuration, the best practice is to attach the same number of drive enclosures behind each node pair.
- Drive bays that are not filled with a drive must be covered with a drive blank to preserve proper air flow.
- If future capacity upgrades are expected, include enough Drive Enclosures so that there are some empty bays in each enclosure after all drives are added.

Step 5 - Choose Drives

Drives are orderable at the time the array is purchased, or can be added in the future when additional capacity is required. HPE 3PAR StoreServ 9000 drives are sold as single drives.

HPE 3PAR StoreServ 9000 Drives

HPE 3PAR SSDs	HPE 3PAR 9000 400GB SAS SFF (2.5in) SSD with All-inclusive Single-system Software	Q0F40A
	HPE 3PAR 9000 1.92TB SAS SFF (2.5in) SSD with All-inclusive Single-system Software	Q1J36A
	HPE 3PAR 9000 3.84TB SAS SFF (2.5in) SSD with All-inclusive Single-system Software	Q0F41A
	HPE 3PAR 9000 7.68TB SAS SFF (2.5in) SSD with All-inclusive Single-system Software	Q0F42A
	HPE 3PAR 9000 15.36TB SAS SFF (2.5in) SSD with All-inclusive Single-system Software	Q0F43A
HPE 3PAR FIPS Encrypted SSD	HPE 3PAR 9000 3.84TB SAS SFF (2.5in) FIPS Encrypted SSD with All-inclusive Single-system Software	Q0F44A
	HPE 3PAR 9000 7.68TB SAS SFF (2.5in) FIPS Encrypted SSD with All-inclusive Single-system Software	Q0F45A
	HPE 3PAR 9000 15.36TB SAS SFF (2.5in) FIPS Encrypted SSD with All-inclusive Single-system Software	Q0F46A

- The minimum recommended initial quantity is eight (8) SSDs per node pair.
- Minimum upgrade quantity is 4 drives per node pair or 2 drives per enclosure, whichever is larger. Best practice is to run Autonomic Rebalance (also known as tunesys) after adding the drives.
- RAID 6 is recommended.
- All drive enclosures must contain an even number of drives, with a minimum of two.
- A best practice is to add equal numbers of drives to all enclosures.
- With a four node configuration, the best practice is to attach the same number of drives to each node pair.

Configuration Information

- Small Form Factor (SFF) drives must be loaded in pairs of identical drives, beginning with the leftmost slot, slot 0, and filling to the right, leaving no empty slots between drives.

HPE 3PAR Encryption License	HPE 3PAR 9450 Data Encryption LTU	L7F18A
	HPE 3PAR 9450 Data Encryption E-LTU	L7F18AAE

- An encrypted HPE 3PAR StoreServ array, i.e. any HPE 3PAR StoreServ array that has the HPE 3PAR Data Encryption license activated or intended to be activated, must have only self-encrypted drives installed.
- A non-encrypted HPE 3PAR StoreServ array can have a mix of encrypted and non-encrypted drives.
- Customers have option to turn on encryption, non-disruptively, at any time, even after data has been written to the system.
- FIPS 140-2 Validated Self-Encrypting Drives (SEDs) have been certified by the U.S. National Institute of Standards and Technology (NIST) and Canadian Communications Security Establishment (CSE) as meeting the Level 2 security requirements for cryptographic modules as defined in the Federal Information Processing Standards (FIPS) 140-2 Publication
- Strengthen the DAR solution with an optional FIPS 140-2 Level-2 validated external key manager. Supports KMIP 1.1 for key management communications
- Supports HPE Enterprise Secure Key Manager 4.0 and SafeNet KeySecure k460 and k150 centralized key management
- A data encryption license (LTU) is required to enable encryption on the array. One encryption license is required for each encrypted array.
- Once encryption is enabled on the HPE 3PAR StoreServ Storage, it cannot be disabled.
- The local key manager is included in the HPE 3PAR OS. There is not a separately orderable part number for the local key manager.

Step 5 - Choose Service Processor Implementation

The HPE 3PAR Service Processor remotely monitors the HPE 3PAR StoreServ 9000 and enables remote servicing of the array. The key capabilities of the Service Processor are to:

- Enable rapid, proactive responses to issues
- Provide a secure communication channel between the customer's data center and HPE 3PAR Central for:
 - Remote Online Software Upgrade --Upgrade software with no application disruption
 - Remote Diagnostics --Maintain key diagnostic information centrally on a historical basis
 - Remote Serviceability--Provide fast predictive response and remediation

Each HPE 3PAR StoreServ 9000 requires its own Service Processor. The Service Processor functions as the communication interface between a customer's IP network and HPE 3PAR Central by managing all service-related communications. The Service Processor leverages the industry-standard HTTP over Secure Sockets Layer (HTTPS) protocol to secure and encrypt data communication. The Service Processor can be deployed either as a virtual Service Processor (VSP) or a physical Service Processor.

Virtual Service Processor

A virtual Service Processor is included free with the base HPE 3PAR Operating System. The virtual Service Processor can be installed on a customer-provided VMware or Microsoft Hyper-V system that meets the following specifications:

- Virtualization operating system
 - VMware vSphere ESXi 4.1, 5.0, 5.1, 5.5

Configuration Information

- Microsoft Hyper-V Server 2008 R2, 2012 or 2012 R2
- Server features
 - 2 GB RAM (minimum for the vSP Virtual Machine)
 - 256 GB free disk space (minimum for the vSP Virtual Machine)
 - NOTE: vSP storage must not reside on the array it is managing.**
 - DVD ROM or DVD RW
 - 1 Gb Ethernet port
 - For vSP on VMware, the server must be listed in the VMware Compatibility Guide
 - For vSP on Hyper-V, the server must be listed on the Windows Server Catalog

Physical Service Processor

The physical Service Processor is a dedicated storage appliance located within the storage rack providing close proximity to the HPE 3PAR StoreServ 9000 Storage. The physical Service Processor is fully supported and maintained by HPE Services. The physical Service Processor has serial port connectivity that provides maintenance access for trouble shooting capabilities.

If a VMware server is not available to run the virtual Service Processor, the physical Service Processor is the alternative choice for remote monitoring and remote service. The physical Service Processor is available in two version: with Single Power Supply and with Redundant Power Supply.

Service Processor	HPE 3PAR StoreServ Redundant Power Supply Service Processor	Q0F86A
--------------------------	---	--------

HPE 3PAR Policy Server

HPE 3PAR Policy Server works to implement customer-configurable remote service access policies. Installed on a customer-provided host, Policy Server provides the customer with ultimate flexibility and control to allow or deny outbound communication or remote service connections to and from an HPE 3PAR StoreServ Storage system. Policy Server also serves as the centralized point for collecting and storing audit logs of all diagnostic data transfers and authorized remote service connections to and from all configured HPE 3PAR Storage systems. HPE 3PAR Policy Server provides the

- The customer has complete control over policy administration.
- A centralized policy administration for all HPE 3PAR Storage systems is provided.
- A centralized audit log to facilitate security audits is provided.
- Up to 100 3PAR systems can be managed with a single 3PAR Policy Server license
- Policy Server 6.1.5 can be run on a Virtual Machine. For the latest information on supported hypervisors, refer to Single Point of Connectivity Knowledge for HPE Storage Products (SPOCK): <http://www.hpe.com/storage/spock>

	HP 3PAR Policy Manager Software LTU	TE400B
--	-------------------------------------	--------

Step 6 - Choose Cables

Cables are required on the HPE 3PAR StoreServ 9000 Storage for drive enclosure connections and for host connectivity. Copper SAS cables are required for connecting the drive enclosures to the nodes on the base rack and for daisy chaining between adjacent drive enclosures. Active Optical SAS Cables are required for connecting drive enclosures in adjacent racks to the nodes in the base rack. OM4 Fiber Cables are required for host connectivity, Remote Copy, and Peer Motion.

Cables

SAS Active Optical Cables	HP External 0.5m (1ft) Mini-SAS HD 4x to Mini-SAS HD 4x Cable	691968-B21
	HP External 2.0m (6ft) Mini-SAS HD 4x to Mini-SAS HD 4x Cable	716197-B21
	HP 10m Mini SAS High Density Active Optical Cable	E7V95A
	HP 25m Mini SAS High Density Active Optical Cable	E7V96A

Configuration Information

	HP 100m Mini SAS High Density Active Optical Cable	E7V97A
OM4 Cables	HP Premier Flex LC/LC Multi-mode OM4 2 fiber 1m Cable	QK732A
	HP Premier Flex LC/LC Multi-mode OM4 2 fiber 2m Cable	QK733A
	HP Premier Flex LC/LC Multi-mode OM4 2 fiber 5m Cable	QK734A
	HP Premier Flex LC/LC Multi-mode OM4 2 fiber 15m Cable	QK735A
	HP Premier Flex LC/LC Multi-mode OM4 2 fiber 30m Cable	QK736A
	HP Premier Flex LC/LC Multi-mode OM4 2 fiber 50m Cable	QK737A
Optical splitters	HP Multi Fiber Push On to 4 x Lucent Connector 5m Cable	K2Q46A
	HP Multi Fiber Push On to 4 x Lucent Connector 15m Cable	K2Q47A
Direct Attach Copper Cables*	HPE 3COM (H3C)	
	HP X240 10G SFP+ to SFP+ 1.2m Direct Attach Copper Cable	JD096C
	HP X240 10G SFP+ to SFP+ 3m Direct Attach Copper Cable	JD097C
	HP X240 10G SFP+ to SFP+ 5m Direct Attach Copper Cable	JG081C
	HP X240 QSFP+ 4x10G SFP+ 1m DAC Cable	JG329A
	HPE X240 QSFP+ 4x10G SFP+ 3m DAC Cable	JG330A
	HPE X240 QSFP+ 4x10G SFP+ 5m DAC Cable	JG331A
	HPE ProCurve	
	HP X242 10G SFP+ to SFP+ 1m Direct Attach Copper Cable	J9281B
	HP X242 10G SFP+ to SFP+ 3m Direct Attach Copper Cable	J9283B
	HPE X242 10G SFP+ to SFP+ 7m Direct Attach Copper Cable	J9285B
	Brocade	
	HPE 1m B-series Active Copper SFP+ Cable	AP818A
	HPE 3m B-series Active Copper SFP+ Cable	AP819A
	HPE 5m B-series Active Copper SFP+ Cable	AP820A
	Cisco	
	HPE C-series 3M Passive Copper SFP+ Cable	K2Q21A
	HPE C-series 5M Passive Copper SFP+ Cable	K2Q22A
	HPE 7m C-series Active Copper SFP+ Cable	QK701A
	HPE 10m C-series Active Copper SFP+ Cable	QK702A
	HPE BladeSystem	
	HP BLc 10G SFP+ SFP+ 3m DAC Cable	487655-B21
	HP BLc 10G SFP+ SFP+ 5m DAC Cable	537963-B21
	HP BLc 10G SFP+ SFP+ 7m DAC Cable	487658-B21

- DAC cables are supported for 10GbE speeds with iSCSI and File protocols.
- Direct Connect between the host and storage is not supported with DAC cables, they require the use of a switch.

For the latest information refer to Single Point of Connectivity Knowledge for HPE Storage Products (SPOCK)

Step 7 - Choose Racking Options

Configuration Information

The HPE 3PAR StoreServ 9000 Storage is available factory integrated on the HPE Intelligent Series racks with the appropriate power distribution units (PDUs). Alternatively, a third party rackmount kit can be purchased in cases where the HPE 3PAR StoreServ 9000 Storage needs to be installed on any rack other than the Hewlett Packard Enterprise racks mentioned below.

HPE 42U 600mm x 1075mm Enterprise Shock Rack	BW904A
HPE 600mm Rack Stabilizer Kit	BW932A
HPE 42U 1075mm Side Panel Kit	BW906A
HPE 42U 600mm x 1200mm Enterprise Shock Rack	BW908A
HPE 42U 1200mm Side Panel Kit	BW909A
HP 3PAR StoreServ Third Party Rack Mount Kit	C8S86A

- When installed on a 42U 1075mm rack (BW904A) the array uses horizontal modular PDUs and can support up to 12 drive enclosures in the base rack.
- When installed on a 42U 1200mm rack (BW908A) the array uses vertical PDUs and can support up to 16 drive enclosures in the base rack.
- Expansion racks can support up to 20 drive enclosures.

NOTE: The Third Party Rack Mount Kit is required for mounting the 3PAR StoreServ 9000 Node enclosure on third party racks. For mounting the drive enclosure, rail kits are included with the product.

For more information on the HPE rack offerings, please see the following URL:

<http://h18004.www1.hpe.com/products/servers/platforms/rackandpower.html>.

For more information on rack options, see: <http://www.hpe.com/products/rackoptions>.

PDUs	HPE G2 Basic Mdlr 4.9kVA/C19 NA/JP PDU	P9Q39A
	HPE G2 Basic 4.9kVA/(20) C13 NA/JP PDU	P9Q41A
	HPE G2 Basic Modular 7.3kVA/C19 INTL PDU	P9Q43A
	HPE G2 Basic 7.3kVA/(20) C13 INTL PDU	P9Q45A
	HPE G2 Basic Mdlr 3Ph 8.6kVA/NA/JP PDU	P9Q52A
	HPE G2 Basic 3Ph 8.6kVA/C13 NA/JP PDU	P9Q54A
	HPE G2 Basic Mdlr 3Ph 11kVA/C19 INTL PDU	P9Q57A
	HPE G2 Basic 3Ph 11kVA/C13 C19 INTL PDU	P9Q58A
	HPE G2 Basic 3Ph 22kVA/(18) C13 INTL PDU	P9Q64A

For more information on PDUs,

see: <http://h18004.www1.hpe.com/products/servers/proliantstorage/power-protection/pdu.html>.

Configuration Information

Hewlett Packard Enterprise provides an extensive selection of features for HPE 3PAR StoreServ Storage. The HPE 3PAR StoreServ 9000 includes as part of the array and drives the All-Inclusive Single-System Software which includes: OS Suite, Virtual Copy, Adaptive Optimization, Dynamic Optimization, Priority Optimization, Virtual Domains, Virtual Lock, Online Import, File Persona, Recovery Manager Central (RMC), and Smart SAN. Additional software can be purchased by ordering the All-inclusive Multi-system Software, a frame license that includes Peer Motion, Remote Copy, Peer Persistence, and Cluster Extension. The Data-at-Rest Encryption Software completes the portfolio of software available with HPE 3PAR StoreServ Storage.

For more information regarding HPE 3PAR 9000 software SKUs see: <http://h20195.www2.hpe.com/v2/GetPDF.aspx/c04199812.pdf>

All-Inclusive Single-System Software

The All-Inclusive Single-System Software is included as part of the array and offers all the software titles necessary to run a single HPE 3PAR Storage array.

HPE 3PAR Operating System Software

The HPE 3PAR Operating System Software Suite gives you everything you need to get up and running quickly and efficiently. It is the foundation software of HPE 3PAR StoreServ Storage, combining advanced virtualization capabilities with simple storage management, high efficiency, and world class performance.

HPE 3PAR Virtual Copy

HPE 3PAR Virtual Copy software protects and shares data affordably with rapid recovery using reservation-less, non-duplicative, copy-on-write snapshots.

HPE 3PAR Adaptive Optimization

HPE 3PAR Adaptive Optimization improves storage utilization by enabling cost-optimized storage tiering.

HPE 3PAR Dynamic Optimization

HPE 3PAR Dynamic Optimization delivers the required service levels for the lowest possible cost throughout the data lifecycle.

HPE 3PAR Priority Optimization

HPE 3PAR Priority Optimization assures service levels with QoS controls for mission critical applications.

HPE 3PAR Virtual Domains and Virtual Lock

With HPE 3PAR Virtual Domains and HPE 3PAR Virtual Lock software, you can segregate access and deliver robust storage services for different applications and user groups with additional security attached to the retention of storage volumes.

HPE 3PAR Online Import

HPE 3PAR Online Import Software is the first do-it-yourself data migration tool for enterprise Storage Area Networks. Unlike traditional block migration approaches, Online Import Software enables customers to migrate storage volumes from HPE EVA Storage, EMC, Hitachi, IBM Storage to HPE 3PAR StoreServ Storage systems online and without complex planning or dependency on extra tools.

HPE 3PAR File Persona Software

This software enables rich set of file protocol services, core file data services and an Object Access API to extend the spectrum of primary storage workloads natively addressed by HPE 3PAR StoreServ 9000 Storage. With this solution, the architectural benefits of HPE 3PAR StoreServ 9000 Storage can be extended to use cases such as: home directories and user shares; content management and collaboration; data preservation and governance; and custom cloud applications.

HPE Recovery Manager Central (RMC) for VMware

Protect your business critical applications without impacting performance using HPE RMC software. With this automated, non-intrusive software, the simplicity and performance of local

Configuration Information

vSphere, MS SQL, Oracle and more

and remote snapshots can be combined with the reliability and cost effective retention of deduplicated backups to protect any application data stored on 3PAR arrays. Based on your RTO objectives, retain the space-efficient snapshots on the 3PAR array itself or offload them to a StoreOnce Backup system using fast, efficient, Express Protect Backups. Based on your RPO objectives, generate as many application-consistent recovery points as desired for VMware VMs, MS SQL and Oracle databases or automate the protection workflow for any application data on 3PAR using the RMC REST API SDK. **NOTE: RMC for Oracle is supported for Oracle running on RHEL and OL platforms**

HPE 3PAR Recovery Manager for Hyper-V (RM-H)

Protect your Microsoft Hyper-V environment with HPE 3PAR Recovery Manager for Microsoft Hyper-V and the HPE 3PAR VSS Provider software, included in this software bundle. By leveraging HPE 3PAR Virtual Copy software, RM-H enables administrators to non-disruptively create space-efficient, application-consistent, point-in-time snapshots to protect and recover Hyper-V Virtual Hard Disks (VHDs) and individual VMs.

HPE 3PAR Recovery Manager for Exchange (RM-E)

Protect your Microsoft Exchange environment with HPE 3PAR Recovery Manager for Microsoft Exchange and the HPE 3PAR VSS Provider software, included in this software bundle. By leveraging HPE 3PAR Virtual Copy software, RM-E enables administrators to non-disruptively create space-efficient, application-consistent, point in time snapshots to protect and recover Exchange databases and mailboxes.

HPE 3PAR Recovery Manager for Oracle (RM-O)

Protect your Oracle environment running on Solaris, HP-UX or IBM AIX platforms with HPE 3PAR Recovery Manager for Oracle. By leveraging HPE 3PAR Virtual Copy software, RM-O enables Oracle administrators to non-disruptively create space-efficient, application-consistent, point-in-time snapshots to protect and recover Oracle databases and instances. For Oracle environments running on RHEL or Oracle Linux, please refer to RMC for Oracle above.

HPE Smart SAN

HPE Smart SAN for HPE 3PAR makes end-to-end SAN configuration and management simple and autonomic, reducing the probability of errors through SAN automation. It is an application embedded in the SAN components (array, hosts and switches) that enables the 3PAR to automate configuration for settings and policies across the SAN. Smart SAN features enable customers to automate peer zoning, resulting in the creation of fewer zones, and enables configuration of zones in minutes, not hours.

HPE StoreFront Remote SaaS Portal

The HPE StoreFront Remote SaaS Portal provides proactive tools and integrated data collection from the HPE 3PAR StoreServ Storage arrays that call home to deliver unique insights and analytics all in one dashboard. Identify capacity and performance issues early through intuitive capacity and performance trend analysis and forecasting. These valuable analytics help maximize asset utilization and optimize the datacenter with recommendations and remedial actions when issues arise. Users can log into <http://www.storefrontremote.com> to claim their arrays and get access for free.

All-inclusive Multi-system software

The All-inclusive Multi-system software is an optional software suite that includes Peer Motion, Remote Copy, Peer Persistence, and Cluster Extension.

HPE 3PAR Peer Motion

HPE 3PAR Peer Motion enables load balancing at will wherein, movement of data and workloads between arrays is initiated without impacting applications, users or services.

HPE 3PAR Remote Copy

HPE 3PAR Remote Copy offers simple and cost effective data protection for efficient multi-tenant disaster recovery.

Configuration Information

HPE 3PAR Peer Persistence	HPE 3PAR Peer Persistence software enables HPE 3PAR StoreServ systems located at metropolitan distances to act as peers to each other, presenting a nearly continuous storage system to VMware vSphere hosts connected to them.
HPE 3PAR Cluster Extension	HPE 3PAR Cluster Extension Software offers rapid automated protection against application downtime from fault, failure, or site disaster. CLX integrates with the Windows OS clustering software and HPE 3PAR Remote Copy to automate failover and failback between sites

Step 9 - Choose File Controller

With HPE 3PAR StoreServ File Controller you get an efficient, bulletproof, and effortless way to provide file storage from HPE 3PAR StoreServ Storage. 3PAR StoreServ File Controller saves you time and money by supporting hundreds to thousands of concurrent users and diverse file workloads. It also has non-intrusive data deduplication that provides an average 50-60% in space savings. It provides security through features such as built-in encryption, sophisticated access controls, online snapshots, and the ability to run endpoint protection and backup software onboard so that data is protected at rest and in flight. HPE 3PAR StoreServ File Controllers are clustered file gateway configurations with transparent failover and online rolling maintenance updates that deliver continuous availability of data to users, servers, and applications. With a straightforward and consistent management experience, it also provides robust capabilities for demanding 24 x 7 file storage environments.

For more details on the specifications and data services offered by the HPE 3PAR StoreServ File Controller please refer to the following link: <http://www8.hpe.com/h20195/v2/GetHtml.aspx?docname=c04637524>

Appendix

Physical Dimensions	Width in/cm	Depth in/cm	Height in/cm/U	Weight lb/kg
42U 1075mm Intelligent Series Rack	23.54/597.9	44.3/1125.2	79/2006.6	451/205
42U 1200mm Intelligent Series Rack	23.54/597.9	51.19/1300.2	79/2006.6	531/241
HPE 3PAR 9450 2N Storage Base (2 controller nodes, 2 SAS HBAs)	17.3/44	32.1/81.6	13.88/35.25/8	47.7/21.6
HPE 3PAR 9450 Controller Node (2 SAS HBAs)	12.7/32.2	27.2/69.1	3.2/8.2/8	48.15/21.8
HPE 3PAR 9000 2U SFF SAS Drive Enclosure (without drives)				38/17.3
Service Processor				37.48/17

Supported Host FC Connections

FC Connector Type from Storage System to Host Port	LC to LC
FC Cable Core Diameter	OM4
Connector Boot Length	Standard

Power and Heat

Single Phase Power Supply Requirements (per rack or cabinet)

NEMA (North America, Taiwan, Philippines & Japan)

Input Voltage (VAC)	220 (200 - 240)
Frequency (Hz)	50 - 60
Circuit Breaker Maximum	30 A per PDU (de-rated to 24 A)
Power Plugs	(4) L6-30P with 1+1 redundant (Base and Exp racks)
Power Connectors	(4) L6-30C with 1+1 redundant (Base and Exp racks)
Power Receptacles	(4) L6-30R with 1+1 redundant (Base and Exp racks)

IEC (International)

Input Voltage (VAC)	220 (200 - 240)
Frequency (Hz)	50 - 60
Circuit Breaker Maximum	32 A per PDU
Power Plugs	(4) IEC 60309-332P6 (32A) with 1+1 redundant (Base and Exp racks)
Power Connectors	(4) IEC 60309-332C6 (32A) with 1+1 redundant (Base and Exp racks)
Power Receptacles	(4) IEC 60309-332R6 (32A) with 1+1 redundant (Base and Exp racks)

Three Phase Power Supply Requirements (per rack or cabinet)

NEMA (North America, Taiwan, Philippines & Japan)

Input Voltage (VAC)	200 - 240 p-p
Frequency (Hz)	50 - 60
Circuit Breaker Maximum	48 A per PDU (de-rated to 27.71 A per phase)
Power Plugs	(4) L15-30P with 1+1 redundant (Base and Exp racks)
Power Connectors	(4) L15-30C with 1+1 redundant (Base and Exp racks)

Appendix

Power Receptacles (4) L15-30R with 1+1 redundant (Base and Exp racks)

IEC (International)

Input Voltage (VAC) 200 - 240 p-n; 380 - 415p-p
 Frequency (Hz) 50 - 60
 Circuit Breaker Maximum 16A per phase per PDU (Base and Exp racks)
 Power Plugs (2) IEC 60309-516P6W (16A) with 1+1 redundant (Base and Exp racks)
 Power Connectors (2) IEC 60309-516C6W (16A) with 1+1 redundant (Base and Exp racks)
 Power Receptacles (2) IEC 60309-516R6W (16A) with 1+1 redundant (Base and Exp racks)

Refer to the **HPE Power Advisor** online tool for power consumption, heat loading, and circuit sizing information available at <https://paonline56.itcs.hpe.com>

Environmental Specifications

Operating Temperature 41° to 104° F (5° to 40° C) – Reduce rating by 1° F for each 1000 ft (1.8° C/1,000 m)
 Shipping Temperature (Controller Node) -22° to 140° F (-30° to 60° C). Maximum rate of change is 20° C/hr (36° F/hr)
 Shipping Temperature (Drive Enclosure) 32° to 140° F (0° to 60° C). Maximum rate of change is 20° C/hr (36° F/hr)
 Operating Altitude (ft/m) max. 10,000 ft / 3,048 m
 Shipping Altitude (ft/m) max. 40,000 ft / 12,192 m
 Humidity 10% to 90% non-condensing
 Shipping Humidity 10% to 90% non-condensing
 Operating Vibration 0.25G, Sine, 5-500 Hz; 0.25 GRMS, Random 5-500 Hz
 Non-operating Vibration 0.5G, 5 - 500 Hz, Sine; 0.5 GRMS, Random, 5-500Hz
 Operating Shock (Controller Node) 5G, 11ms, half-sine
 Operating Shock (Drive Enclosure) 5G, 11ms, half-sine
 Non-operating Shock 10G, 11ms, half-sine
 Raised Floor Recommended
 Maximum Exhaust Air Flow Per Controller Node – 157 CFM
 Per Drive Enclosure – 81 CFM

Acoustics
 Sound pressure level measured per ISO 7779 specifications during normal operating fan conditions

Fan Speed (RPM)	4-way Node	Fan Speed (RPM)	Drive Enclosure
5600	76.7	5580	43
8500	87.1	16500	64

Electromagnetic Compatibility

CISPR 22:2008/ EN55022:2010 Class A
 CISPR 32:2015 / EN 55032:2015 Class A
 CISPR 24:2010/ EN 55024:2010
 IEC 61000-3-2: 2014/ EN 61000-3-2: 2014
 IEC 61000-3-3:2013/ EN 61000-3-3: 2013
 AS/NZS CISPR22: 2009 +A1:2010 Class A
 AS/NZS CISPR 32:2013
 CNS 13438:2006 Class A
 47 CFR Part 15 Subpart b Class A
 ICES-003 Issue 6 Class A
 V-3/2015.04
 RRA KN 32 Class A

Appendix

RRA KN 35

Safety

IEC 60950-1:2005 (2nd Edition); +A1:2009 +A2:2013
 EN 60950-1:2006 +A11:2009 +A1:2010 +A12:2011 +A2:2013
 IEC 62368-1:2014 ed 2
 EN 62368-1:2014
 EN 62479:2010
 CNS 14336-1 2nd Edition
 UL 60950-1-07 2nd Ed. +A1:2011 +A2:2014
 CAN/CSA C22.2 No. 60950-1-07 +A1:2011 +A2:2014
 CSA/UL 62368-1:2014

Certifications / Markings

cTUVus Mark	CE Mark	BSMI RoHS	Ukraine
TUV GS-mark	FCC Class A	BIS	WEEE
	IC Class A	KCC	China RoHS
	VCCI Class A,	EAC	Morocco
		RCM	Nordic text

NOTE: Specifications are subject to change without notice.

Summary of Changes

Date	Version History	Action	Description of Change
05-Jun-2017	Version 1	Created	Create first version



Sign up for updates



**Hewlett Packard
Enterprise**

© Copyright 2017 Hewlett Packard Enterprise Development LP. The information contained herein is subject to change without notice. The only warranties for Hewlett Packard Enterprise products and services are set forth in the express warranty statements accompanying such products and services. Nothing herein should be construed as constituting an additional warranty. Hewlett Packard Enterprise shall not be liable for technical or editorial errors or omissions contained herein.

a00005876enw- 15897 - Worldwide - V1 – 05-June-2017